

PNEUMATIC POWER CLAMPS

Swing Cylinders



SERIES 8000, 8100 8200, 8300

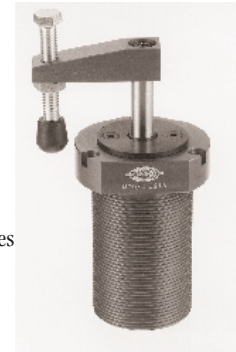
Quick, Clean & Economical

Ideal for installations where hydraulic power is not suitable, these pneumatic power clamps from DE-STA-CO have all the same quick-acting advantages and can produce up to 160 lbs. clamping force from shop line air pressure (see chart). These double-acting clamps are red anodized aluminum with either a threaded body that permits three mounting options, or a block-style mounting body.

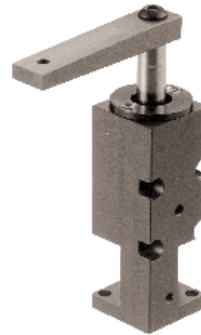
Intended for quick clamping in secondary manufacturing operations on metallic or non-metallic products. These clamps offer a combination of features that makes them uniquely adaptable to such applications, as welding and assembly operations. Spindles included.



Series 8300



Series



Series



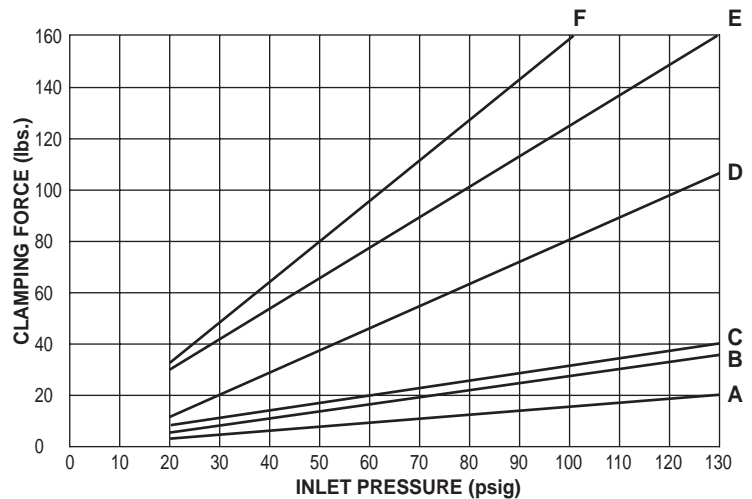
Series 80

- 90° swing of clamping arm minimizes obstruction in the workspace and makes loading or unloading of parts easy.
- 1/2" clamping stroke (downward arm travel) for Series 8200/8300 and 3/8" clamping stroke for Series 8000/8100 allows wide variation in part size. The clamp adjusts automatically on every cycle.
- Quick swing-and-clamp movement reduces cycle times in your operation.
- Pneumatic operation is economical and clean, and allows precise control and monitoring of the clamping force.
- Multiple mounting options allow the clamp to be adapted to the fixture for the best use of space and to minimize installation time.
- Clamping force is adjustable across a wide range: 20 lbs. to 160 lbs. Clamp exerts just the force your operation requires...without deforming delicate parts.
- Broad operating temperature range of -40° F to 250° F allows installations in extreme environments.
- Multiple arm options including Standard Arms, Long Arms, T-Arms and Blank Arms for user adaptation.
- Maximum inlet pressure 130 psi.

SERIES 8000/8100

A.....(2.87)LONG ARM(3.75) D
B.....(1.75)STANDARD ARM(2.75) E
C..... NO ARM (STRAIGHT PULL) T-ARM F

SERIES 8200/8300

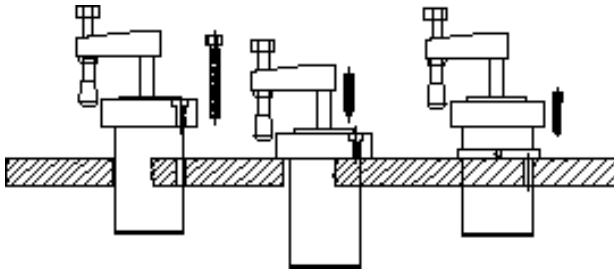


Note: See pages 69-73, 104 & 121-123 for accessories.



Swing Cylinder Rotation: Frame of reference for specifying rotation is the clamp arm viewed from above during the clamping stroke. A right-hand unit rotates clockwise and then clamps down; a left-hand unit rotates counter-clockwise, and then clamps down.

8000, 8200 Mounting Options

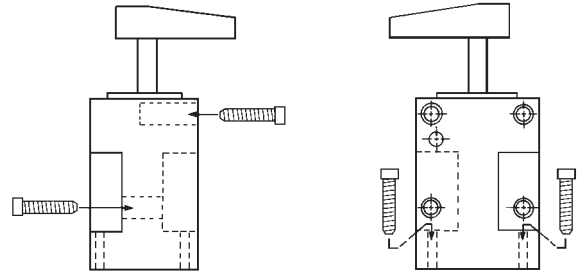


Threaded body in a tapped hole. Position is locked by a single cap screw into a tapped hole in fixture.

Cylinder body passes through a clearance hole. Three mounting screws pass through the top flange into holes tapped in the fixture.

Optional mounting block 821553 may be used above or below the work surface. Clamp height is easily reset.

8100, 8300 Mounting Options

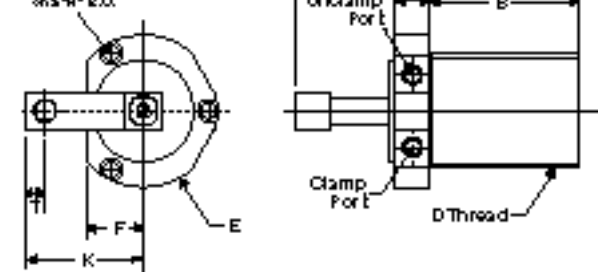


Can be mounted to the side or front of the fixture, or mounted back to back for multiple clamping operations.

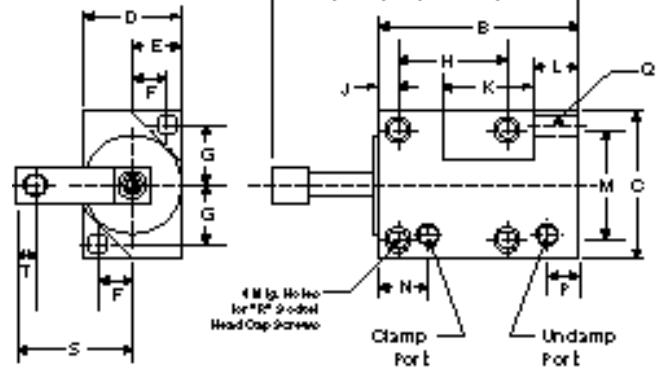
Mounted to the top of the work surface through the two mounting holes in the bottom of unit.

SERIES 8000, 8200

ØBore I or 1/2" Bore II
Head Cap Screw -
Øhole
on 1/4" B.O.



SERIES 8100, 8300



SERIES	Dimensions																	Port Size	
	A	B	C	D	E	F	G	H	J	K	L	M	N	P	Q	R	S		T
8000	4.75	2.87	.62	1 1/8-16	1.25	—	—	—	—	1.44	—	—	—	—	—	—	—	.31	#10-32
8100	4.75	3.50	1.25	1.25	.62	.47	.47	1.00	1.12	1.00	.25	1.00	1.50	.47	.20	#10	1.44	.31	#10-32
8200	6.36	3.36	.87	2 1/4-12	3.00	1.16	.25	2.66	—	2.38	—	—	—	—	—	—	—	.38	1/8 NPT
8300	6.36	4.23	3.00	2.00	1.00	.72	1.22	2.25	.50	1.87	.94	2.25	1.00	.65	.40	.31	2.38	.38	1/8 NPT

PNEUMATIC POWER CLAMPS

Swing Cylinders



Model No.	EDP No.	Swing	Arm Supplied	Travel Dur. Rotation	Vertical Clamp Stroke	Maximum Arm Length	Weight
8015	58015	RH	801528	.466	.38	2.25	1 lb.
8016	58016	LH	801528	.466	.38	2.25	1 lb.
8015-LA*	58017	RH	OPTIONAL	.466	.38	2.25	1 lb.
8016-LA*	58018	LH	OPTIONAL	.466	.38	2.25	1 lb.
8115	58115	RH	801528	.466	.38	2.25	1 lb.
8116	58116	LH	801528	.466	.38	2.25	1 lb.
8115-LA*	58117	RH	OPTIONAL	.466	.38	2.25	1 lb.
8116-LA*	58118	LH	OPTIONAL	.466	.38	2.25	1 lb.
8215	58215	RH	821512	.75	.50	3.00	2.2 lbs.
8216	58216	LH	821512	.75	.50	3.00	2.2 lbs.
8215-LA*	58217	RH	OPTIONAL	.75	.50	3.00	2.2 lbs.
8216-LA*	58218	LH	OPTIONAL	.75	.50	3.00	2.2 lbs.
8315	58315	RH	821512	.75	.50	3.00	2.2 lbs.
8316	58316	LH	821512	.75	.50	3.00	2.2 lbs.
8315-LA*	58317	RH	OPTIONAL	.75	.50	3.00	2.2 lbs.
8316-LA*	58318	LH	OPTIONAL	.75	.50	3.00	2.2 lbs.

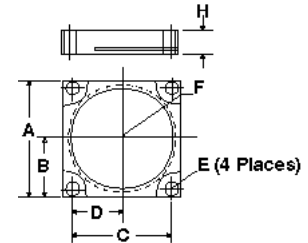
Maximum Arm Length is the maximum clamping distance from piston rod.

*When ordering -LA Models, contact factory for end of rod details.

ACCESSORIES

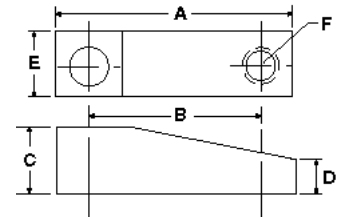
MOUNTING BLOCK

Part No.	EDP No.	Use With Series No.	A	B	C	D	E	F	H
821553	58233	8200	2.50	1.25	2.12	1.06	0.27	2 1/4 - 12	0.50
801553	58033	8000	1.38	0.69	1.08	0.54	0.20	1 1/8 - 16	0.50



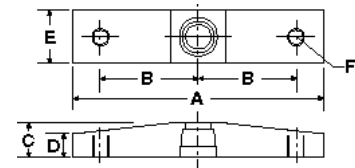
ARM

Part No.	EDP No.	Use With Series No.	A	B	C	D	E	F	G
801528	58058	8000, 8100	1.75	1.12	0.39	0.27	0.62	10-32	—
801529	58059	8000, 8100	2.87	2.25	0.39	0.27	0.62	10-32	—
821512	58252	8200, 8300	2.75	2.00	0.75	0.37	0.75	3/8-16	—
821513	58253	8200, 8300	3.75	3.00	0.75	0.37	0.75	3/8-16	—



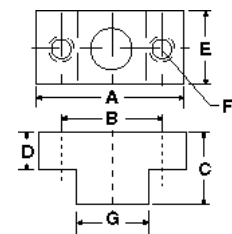
T-ARM

Part No.	EDP No.	Use With Series No.	A	B	C	D	E	F	G
801530	58053	8000, 8100	2.87	1.12 (2)	0.39	0.27 (2)	0.62	10-32 (2)	—
801531	58051	8000, 8100	5.12	2.25 (2)	0.39	0.27 (2)	0.62	10-32 (2)	—
821554	58254	8200, 8300	4.75	2.00 (2)	0.75	0.37 (2)	0.75	3/8-16 (2)	—
821555	58251	8200, 8300	6.75	3.00 (2)	0.75	0.37 (2)	0.75	3/8-16 (2)	—



BLANK ARM

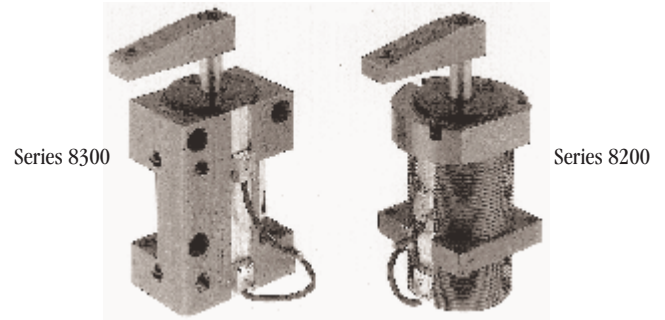
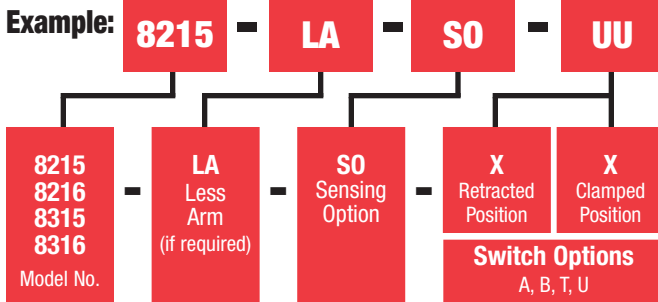
Part No.	EDP No.	Use With Series No.	A	B	C	D	E	F	G
801532	58052	8000, 8100	1.37	1.00	0.39	0.25	0.62	10-32 (2)	0.62
821556	58256	8200, 8300	1.50	1.06	0.75	0.37	0.75	1/4-20(2)	0.75



SERIES 8200, 8300 with Sensing Option

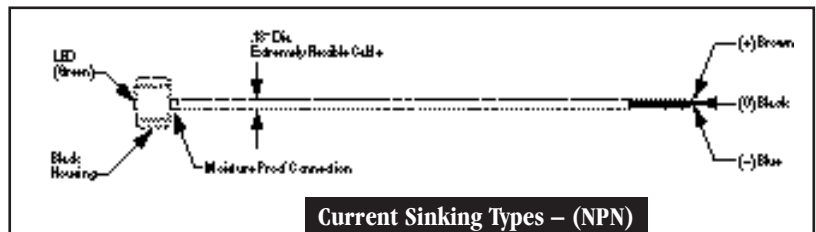
For added safety and control, DE-STA-CO now makes it easy for users of its Models 8200 and 8300 pneumatic swing cylinders to determine exactly when these clamps are fully open and fully closed. To sense the clamp's open and closed positions, small, low voltage Hall Effect switches are installed in a groove machined into the side of the cylinder body. The switches are actuated by a magnetic piston ring as the cylinder's piston moves up and down. The open or closed condition of the switches is then read by a programmable logic controller (PLC) or other electronic device.

Model Code & Ordering Information



SENSING SWITCH OPTIONS

Switch Options	Description	EDP No.
A	Sensor with 24" Leads	58401
B	Sensor with 120" Leads	58402

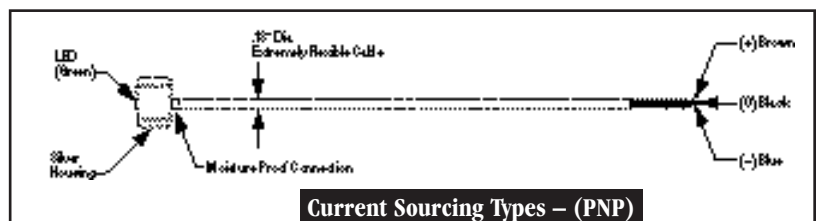


Absolute Maximum Rating

Supply Voltage (vs)	5-30 Volts DC (6-24 VDC recommended)
Voltage Externally Applied to Output	+30.0 VDC Max. with Switch in "off" condition only -0.5 Volts Min. with Switch in "off" or "on" condition
Output Current	30 mA (20 mA recommended)
Temperature	-20° C to 70° C (-4° F to 158° F)

Warning: Reverse wiring will destroy solid state electronic components. Presence of external magnetic/electromagnetic field may interfere with the operation of the sensor.

Switch Options	Description	EDP No.
T	Sensor with 24" Leads	58403
U	Sensor with 120" Leads	58404



Absolute Maximum Rating

Supply Voltage (vs)	5-30 Volts DC (6-24 VDC recommended)
Output Current	30 mA (20 mA recommended)
Temperature	-20° C to 70° C (-4° F to 158° F)

Warning: Reverse wiring will destroy solid state electronic components. Presence of external magnetic/electromagnetic field may interfere with the operation of the sensor.